

Jaw Crusher

PE/PEX-SERIES



Liming Heavy Industry

www.break-day.com



Jaw Crusher

PE/PEX-SERIES

Overview

Jaw crushers are typically used as primary crushers, or the first step in the process of reducing rock. They typically crush using compression. The rock is dropped between two rigid pieces of metal, one of which then move inwards towards the rock, and the rock is crushed because it has a lower breaking point than the opposing metal piece.

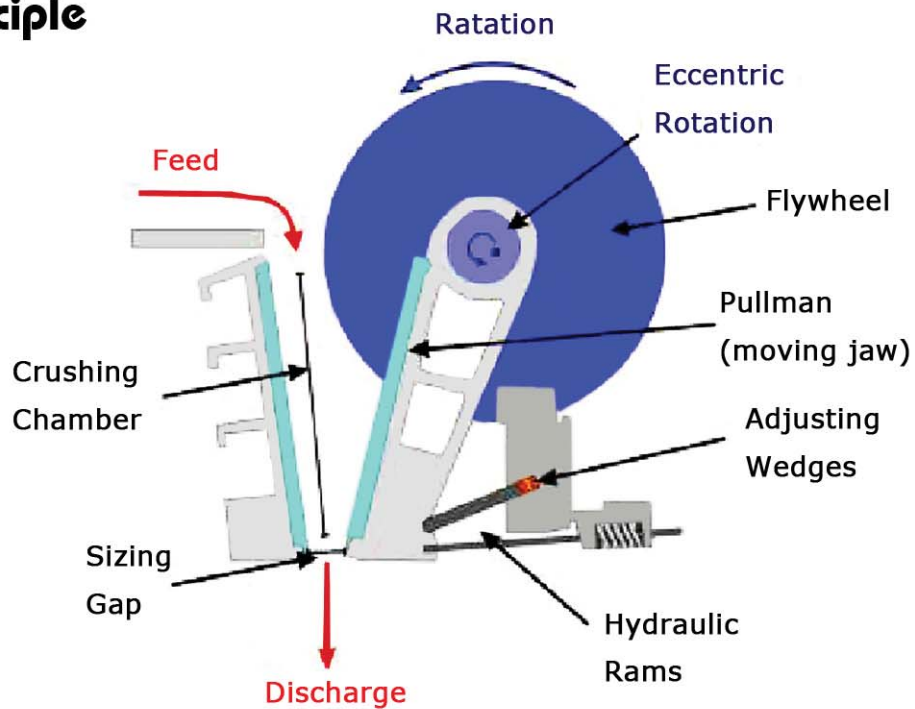
Jaw crusher movement is obtained by using a pivot point located at one end of the "swing jaw", and an eccentric motion located at the opposite end.



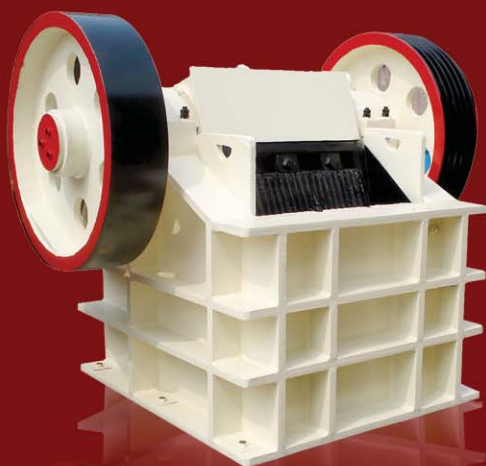
Jaw Crusher

PE/PEX-SERIES

Working Principle



The motor transmits power through belt, drives the moving jaw to do periodic motion towards the fixed jaw by the eccentric shaft. The angle between toggle plate and moving jaw plate increases when moving jaw moves . So the moving jaw moves towards the fixed jaw. The stuff will be crushed in this process. The angle between toggle plate and moving jaw decreases when moving jaw moves down, the moving jaw moves leaves fixed jaw by pulling rod and spring, the final crushed stuff will be discharged from the outlet.



Features

1. High ratio of crushing,
2. Even final size,
3. Simple structure,
4. Reliable working condition,
5. Easy maintenance,
6. Low operating cost.

Jaw Crusher

Specifications

PE/PEX-SERIES

Model	Max. Feeding Size (mm)	Discharge Size (mm)	Capacity (t/h)	Motor Power (kW)	Overall Dimensions (mm)	Weight (t)
PE150×250	125	10-40	1-3	5.5	896×745×935	0.8
PE250×400	200	20-60	5-20	15	1150×1275×1240	2.8
PE400×600	350	40-100	15-60	30	1700×1732×1653	6.5
PE500×750	425	50-100	50-100	55	2035×1921×2000	10.3
PE600×900	480	65-160	60-130	75	2290×2206×2370	16.5
PE750×1060	630	80-140	100-250	110	2620×2302×3110	29
PE900×1200	750	95-165	160-380	110	3789×2826×3025	54.5
PE1000×1200	850	195-265	315-550	110	3335×3182×3025	57
PE1200×1500	1020	150-300	300-800	160-220	4200×3750×3820	100.9
PEX250×750	210	25-60	10-40	22	1667×1545×1020	5
PEX250×1000	210	25-60	15-50	30	1550×1964×1380	6.5
PEX250×1200	210	25-60	20-60	37	1560×2104×1415	7.7



Jaw Crusher

PE/PEX-SERIES

Contact us

Liming Heavy Industry

Tel: 0086-371-67992899

0086-371-67371699

Fax: 0086-371-67992699

E-mail: info@limingco.com

MSN:

SalesCrusher@hotmail.com

www.break-day.com

