



PFW SERIES EUROPEAN TYPE IMPACT CRUSHER

TOP 1 BRAND OF CHINA'S CRUSHING
AND GRINDING INDUSTRY







PRODUCT PRESENTATION

With European-originated technology, rational structure, high efficiency, easy operation, simple maintaining and high safety performance, PFW Series European Type Impact Crusher is an improved product by our company. It is the most ideal choice to coarse/medium/fine crush mid/soft stones because of its biggest advantage that the particle form of its product is perfectly cubic with no strain or fissure. Through technical research, our company is the first to use CAD (Computer Aided Design) system and computer simulation test system with professional and patient technical service to insure the quality of every link, such as design, development, producing and after sale.

Three Innovative Technologies Highlight the Value of Liming Brand:

Heavy-designed rotor, longer usage life

Unitary cast steel structure, higher reliability

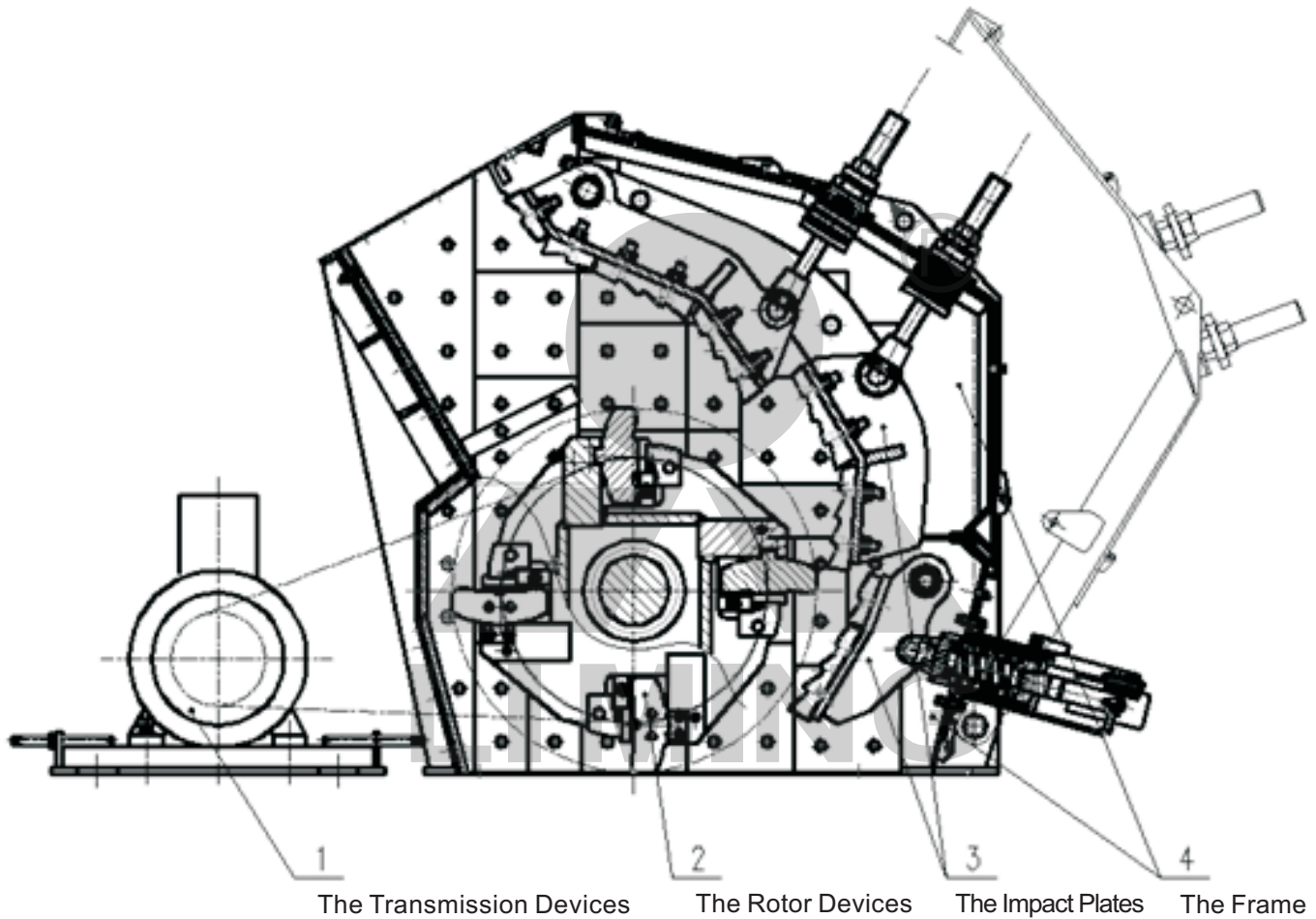
Semi-automatic adjusting device, safer and easier operation

Purpose and Application Scope:

By introducing the latest European crusher manufacturing technology, PFW impact crusher can make product with uniform particle size, with the highest capacity of 500 tons per hour. It is widely used in the fields below:

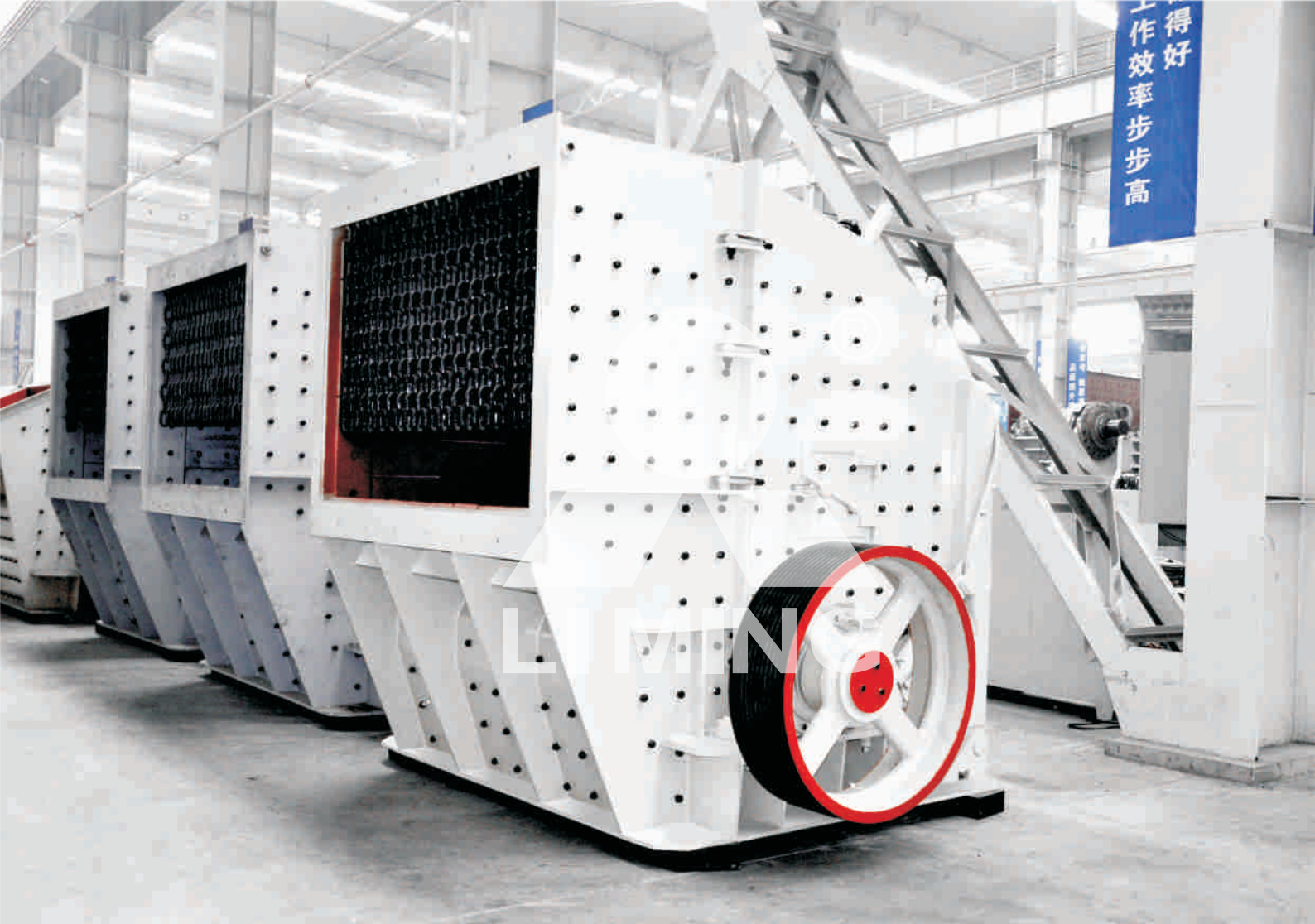
1. Building material, traffic, energy, cement, mining, chemicals, freeway construction, water conservancy project, construction gravel, mechanically sand processing, etc;
2. Suitable for coarse/medium/fine crushing stones and ores with an input size no bigger than 700mm and a compressive strength no bigger than 300Mpa, not suitable for those with a surface moisture bigger than 8%-10% or sticky materials.





THE STRUCTURE OF PFW SERIES EUROPEAN TYPE IMPACT CRUSHER

The PFW Series European Type Impact Crusher mainly contains four parts: the Rotor Devices, the Impact Plates, the Frame, the Top-opening Screw Devices(or the Top-opening Lubrication Devices), the Transmission Devices. As soon as the materials get into the working area of the flat hammers, they will be stroke by the flat hammer and be thrown to the impact devices above the rotor. Then the high speed forces the materials to rebound from the impact plates to the working area of the flat hammers to be stroke again and again until they have been crushed to the required size and discharged from the output under the frame.



OBVIOUS PRODUCT PERFORMANCE ADVANTAGES

1. Heavy Type Rotor Design, World-class manufacturing process

Adopting of the world-class manufacturing process and selecting of the most high-end materials. We guarantee the high quality rotor because of the heavy type rotor design and strict test.

2. Integral Cast Steel Structure, High Bearing Capacity

The adoption of unique laminated crushing principle produces the crushing effect inter-particle, which remarkably reduce flaky particle and make the final granularity more uniform.

3. Semi-automation adjustment device, saving the time and cost

Semi-automation adjustment device and self-equipped open-top device make the maintenance easier and faster, also, it reduces the downtime and repair time, save manpower to operate, and increase the safety factor.



FEATURES



STRUCTURE FEATURES OF PFW SERIES EUROPEAN TYPE IMPACT CRUSHER

1. Rotor

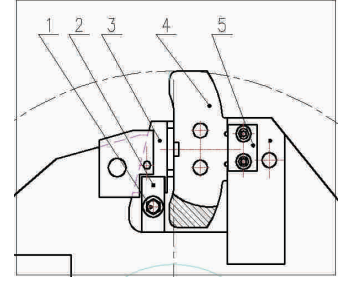
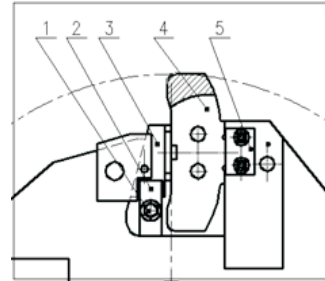
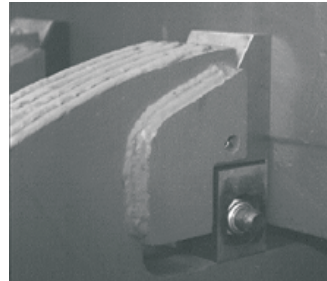
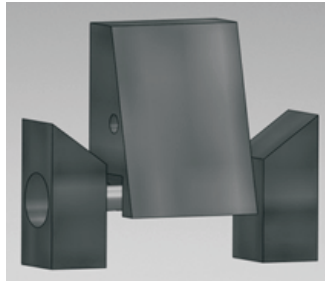
The rotor frame is welded by the high quality steel plate. The hammer is fixed in the correct position and the axial spacing devices can prevent the hammer running around effectively. The hammer is made of high wear-resistant material. The rotor has features of static and dynamic balance and shock resistance.

2. Rack

The rack is composing of chassis and upper cover and it has robust and torsion resistant box weldments and is connected by high strength bolts. The hinged frame cover can be opened and closed by mechanical and hydraulic device to ensure the safe and reliable replacement of wearing parts.

3.Hammer

Hammer is made of high quality high manganese steel, it is strong durability, and convenient replacement, when its abrasion to a certain degree should be timely adjustment or replacement, to avoid the damage of fasteners and other components. The adjustment of the hammer as follow:



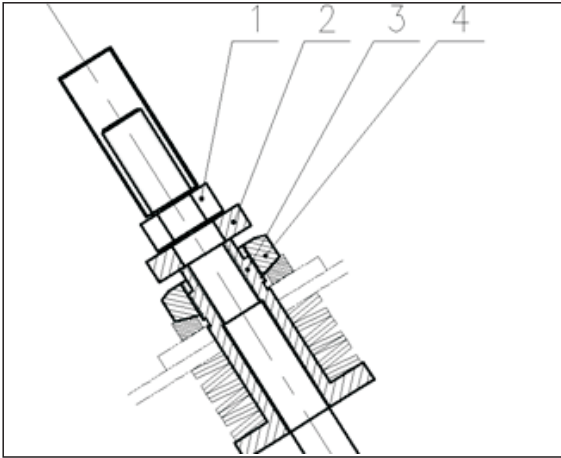
(a) The clamping hammer parts (b) Clamping hammer in the state (c) Hammer before the adjustment (d) Hammer after the adjustment

1.bolt set 2.cant plywood 3.wedge clamping 4.hammer 5.baffle plate



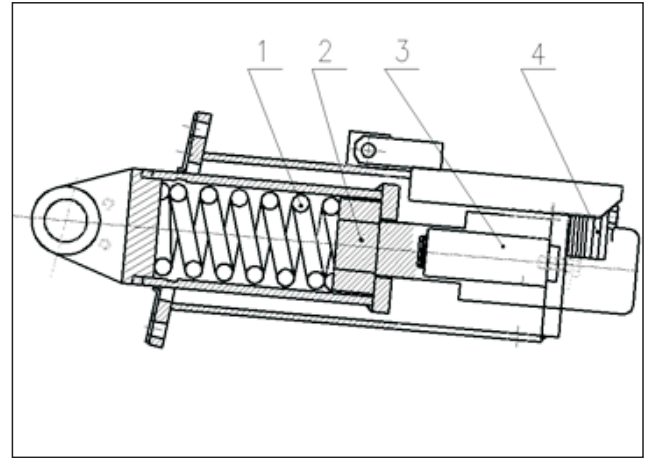
4.Impact racks and rotor racks

Adjust the clearance between the impact racks and rotor racks can conveniently change material particle size and shape of the end products.



The first and second impact plate screw structure adjustment

1.Protective nut set 2.connection plate
3.adjusting sleeve 4.lock nut



The third impact plate adjustment structure chart

1.spring 2.restrictor plates 3.The hydraulic cylinder or adjust the plunger 4.adjust base plate

5.Drive section

Drive by high narrow type SPC V-belt drive. Cooperate with spindle pulley adopt expansion sleeve connection, ease of installation.

6.Semi-automatic flip device

Main frame is the same on both sides of two sets of screw or hydraulic flip device, easy operation can be smoothly after opening and closing of the cover, and maintenance.

7.The spring safety device

The spring safety device is installed behind the impact bracket of main engine. When uncrushable material enters the crushing cavity, it will be discharged through the retreat of the impact racks to ensure the internal safety of crushing structure.

TECHNICAL PARAMETERS

Table 1: crusher with three crushing chambers

Model	Rotor size (mm)	Feed opening (mm)	Maximum feed size(mm)	Capacity (t/h)	Power KW(HP)	Dimension (L×W×H) (mm)	Weight (t)
PFW1214III	Φ1150X1400	570X1430	250	90-170	132(175)	2550X2310X2100	19
PFW1315III	Φ1300X1500	625X1530	300	180-270	200(270)	2960X2570X2380	25
PFW1318III	Φ1300X1800	625X1830	300	220-300	250(350)	2960X2870X2380	30
PFW1415III	Φ1400X1500	800X1530	350	280-350	250(350)	3120X2650X2660	33

Table 2: crusher with two crushing chambers

Model	Rotor size (mm)	Feed opening (mm)	Maximum feed size(mm)	Capacity (t/h)	Power KW(HP)	Dimension (L×W×H) (mm)	Weight (t)
PFW1214II	Φ1150X1400	1100X1430	500	130-200	132(175)	2400X2310X2550	22
PFW1315II	Φ1300X1500	1200X1530	600	180-320	200(270)	2700X2570X2800	29
PFW1318II	Φ1300X1800	1200X1830	700	240-400	250(350)	2700X2870X2800	34
PFW1415II	Φ1400X1500	1300X1530	700	300-480	250(350)	2900X2700X3000	38

Note: Actual capacity on the production spot depends on crushed mineral's hardness, abrasiveness and the feed size. Capacity in the table is just for your reference.

In order to enhance your experience of our equipment during the operation, we strongly recommend spare parts originally manufactured by LIMING Heavy Industry. These high quality spare parts are manufactured using advanced metallurgy techniques, precise machining, and perfect compatibility, ensuring the lowest malfunction operation and creating higher value for our customer.

Crushing Plant



Sine Liner



Spring



Toggle Plate



Guard Liner Plate



Impact Block



Wearproof Plate



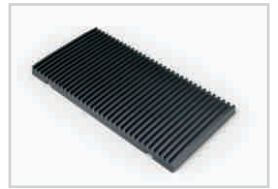
Impact Plate



Tension Rod



Feed Eye Ring



Movable Jaw Plate

Grinding Plant



Ring



Roller



Shovel Base



Shovel



Gland Arove Roller Sleeve



Roller Sleeve



Roller Shaft



Classifier Impeller



Lining Plate



Air Way Guard Plate

PRODUCT LIST

Production Line

Stone Crushing Line

Sand Making Line

Industrial Grinding Line

Grinding Plant

LM Vertical Mill

MTW European Trapezium Mill

LUM Vertical Roller Mill

TGM Trapezium Mill

T130X Superfine Grinding Mill

YGM Series Suspension Mill

HGM Series Micro Powder Mill

Coarse Powder Mill

Raymond Mill

Crushing Plant

HJ Series Jaw Crusher

European Type Jaw Crusher

European Type Impact Crusher

Impact Crusher

Jaw Crusher

HPT Hydraulic Cone Crusher

HST Hydraulic Cone Crusher

CS Series Cone Crusher

Spring Cone Crusher

Sand Making& Screening Plant

VSI5X Vertical Shaft Impact Crusher

VSI Vertical Shaft Impact Crusher

PCL Vertical Shaft Impact Crusher

YKN series vibrating screen

Vibrating Screen

Sand Washing Machine

Belt Conveyer

Vibrating Feeder

Mobile Crushing Plant

Crawler Mobile Crushing Plant

Mobile Primary Jaw Crusher

Mobile Impact Crusher

Secondary Cone Crusher

Multi-Combination Mobile Crusher

Mobile VSI Crusher

Mobile Vibrating Screen

QUALIFICATION

GOST Certificate



Grinding Plant



Crushing Plant



Mobile Crushing Plant

CE Certificate



Grinding Plant



Crushing Plant



Sand Making Plant



ISO9001-2008
Quality Management
System Certification



Environmental management
system certificate



Service – With me, enjoy your pleasant journey.

Liming has the most experienced team of engineers with professional knowledge and spirit of dedication. To serve the clients more conveniently, they scattered all over the world to work all year round. From the site planning to the drawing design, from the technical training to the installation and debugging, from the whole working line that values millions to the small pinion that looks insignificant, they fully understand the influence factors of actual situation on customer business, and create successful solution to improve the production efficiency and the environmental quality for customer operating agency.

WORKSHOP



ENTERPRISE PROFILE



Henan Liming Heavy Industry Science & Technology Co., Ltd. , established in 1987, is the leading enterprise of mining machinery in China.

Liming Heavy Industry is chronically committed to the research and develop of manufacturing of large infrastructure projects, such as construction, energy, transportation, etc. and provides various technical solutions and auxiliary products. "Made in Liming" is highly praised by our cooperative partners from more than 130 countries and regions overseas, such as Russia, Kazakhstan, Azerbaijan, Turkey, Kuwait, South Africa, Egypt, Vietnam, Malaysia, India, Australia, Korea, Canada and the European Union,etc. Liming is deserved to be one of the most excellent enterprises with the most industry customers and the most widely sales level service network.

CONTACT US

HEADQUARTERS

Tel: 0086-371-86162511

Fax: 0086-371-67992699

Email: info@limingco.com

MSN: SalesCrusher@hotmail.com

Address: No.169, Science (Kexue) Avenue, National HI-TECH Industry Development Zone, Zhengzhou, China.

SHANGHAI BRANCH

Tel: 0086-21-33901608

Fax: 0086-21-58377628

Address: No.201-34, Huaxia 3rd Road, Pudong New Area, Shanghai, China.